

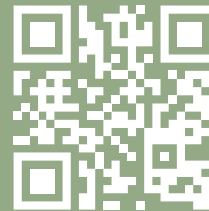
# SMART INSULATION & CONDENSATION CONTROL

**DID YOU  
KNOW?**

INNOVATION IN TIWI & EWI HAS RECENTLY DEVELOPED INTO A QUICKER, CHEAPER, BETTER SOLUTION, NOW WITH NATURAL SUSTAINABLE PRODUCTS FREE FROM ALL VOC'S AND CONTAMINANTS

DISCOVER HOW YOU CAN BEAT THE CONVENTIONAL PITFALLS AND PROVIDE AFFORDABLE INSULATION, CONDENSATION AND DAMP CONTROL, AS WELL AS SOUND INSULATION AND FIRE PROTECTION ALL WITHIN ONE APPLICATION

## TIWI CorkSpray





**DID YOU**  
**KNOW?**

**TIWI CorkSpray**

SMART INSULATION  
& CONDENSATION CONTROL

Cork originates from the bark of the Cork Oak Tree found in Portugal, Spain and Morocco.

The carefully managed harvesting takes place every 9 years, and this sustainable process can be repeated on the same tree for up to 300 years.

Cork really is 'Natures Gift', and its many features and benefits will be fully explained in this document.

# WHAT IS SMART INSULATION?

---



Reduce heat & cold transfer by over 30%

---

Thermal conductivity 0.058 W/mK

---

Class B-s2, d0 Fire Rating

---

Resistant to salt air and water

---

Eliminate Black Spot and Condensation

---

100% Breathable Membrane

---

No harmful VOC's

---

Minimal color fade (1% per year)

---

Custom colour matching

**INCREASE THERMAL  
EFFICIENCY BY OVER**

---

**30%**

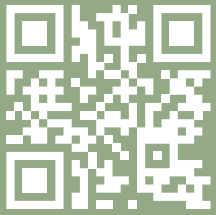


**A SIMPLE CORK OVERSPRAY CAN  
REDUCE YOUR HEATING BILLS AND  
TRANSFORM THE LOOK OF YOUR  
HOME IN AS LITTLE AS THREE DAYS.**

**THIS PRODUCT WILL NOT CRACK &  
IS VIRTUALLY ZERO MAINTENANCE.**

**IT IS WASHABLE AND EASILY  
REPAIRED IF REQUIRED.**

**IT IS 100% BREATHABLE, AND IS A  
SUSTAINABLE ZERO VOC PRODUCT.**



# THERMAL CONDUCTIVITY

---

## DID YOU KNOW?

SPRAY CORK HAS NO THERMAL BRIDGING UNALIKE ALL OTHER THERMAL INSULATION PANELS WHICH HAVE THERMAL BRIDGING ON ALL 4 SIDES.

LOOKING THROUGH A THERMAL IMAGING CAMERA THE ROOM HAS A LATTICE OF THESE COLD SPOTS WHICH WILL INEVITABLY START TO COOL YOUR WARM AIR IN THE ROOM.

THAT IS WHY SPRAY CORK IS A FAST AND CHEAPER WAY TO INSULATE YOUR PROPERTY, IT HAS NO THERMAL BRIDGES AND IS ONLY 3MM IN THICKNESS FOR A CONDUCTIVITY OF 0.058W/mK



Spray Cork 0.058 W/mK



Kingspan KoolTherm 0.022 W/mK

## LETS COMPARE

To fully insulate a new build 3 bedroom house, CorkSpray will be 4 times cheaper, and 9 times faster than conventional thermal panel construction.

Plus, the membrane is only 6mm in thickness, so you don't lose over 200mm of your room dimension.

There is NO WASTE with CorkSpray, it is durable, and will not crack. Cork is a natural and sustainable product, it is 100% breathable, so it will continue to block heat and cold ingress and give a healthier living condition free from moisture and any potential of condensation.

# CLASS B-s2. d0 FIRE RATING

---

**DID YOU  
KNOW?**

**CORK WILL NOT BURN  
IT HAS NO HARMFUL BURN-OFF GASES  
IDEAL FOR FIRE PROTECTION & HVAC  
HANDLES EXTREME HEAT WELL**

Spray Cork has a Class B-s2.d0 rating as it can be applied to Wood, Plastics and other combustible materials.

When applied to class A substrates, such as stone or metal, the classification is unaltered and can be classed as Class A



**DID YOU  
KNOW?**

# IMPERVIOUS TO SALT AIR & WATER

---

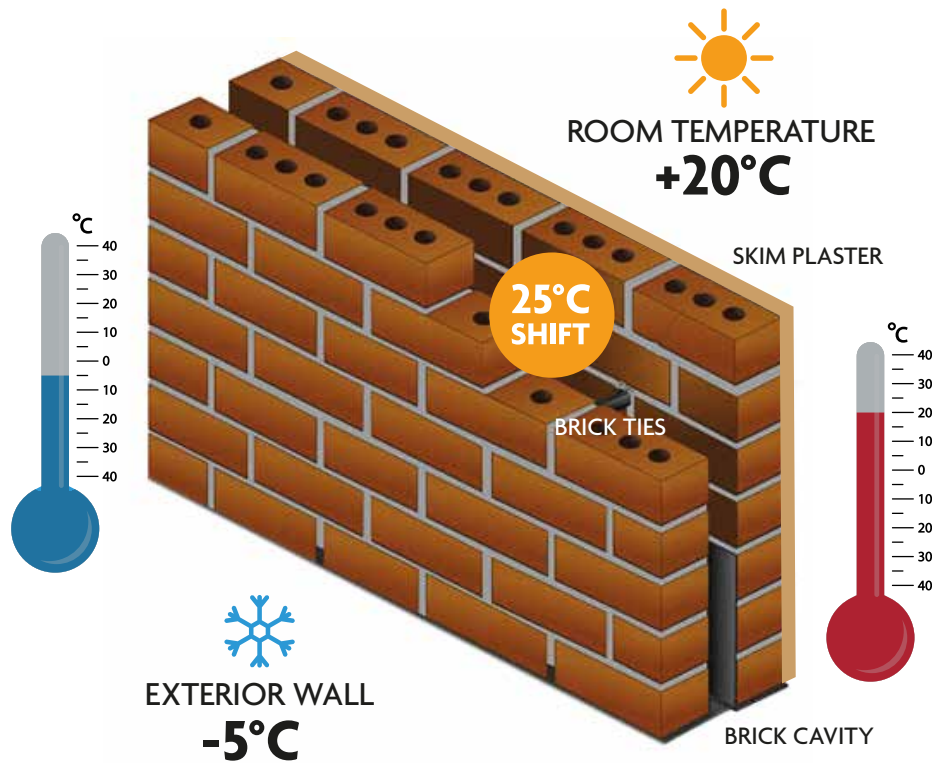
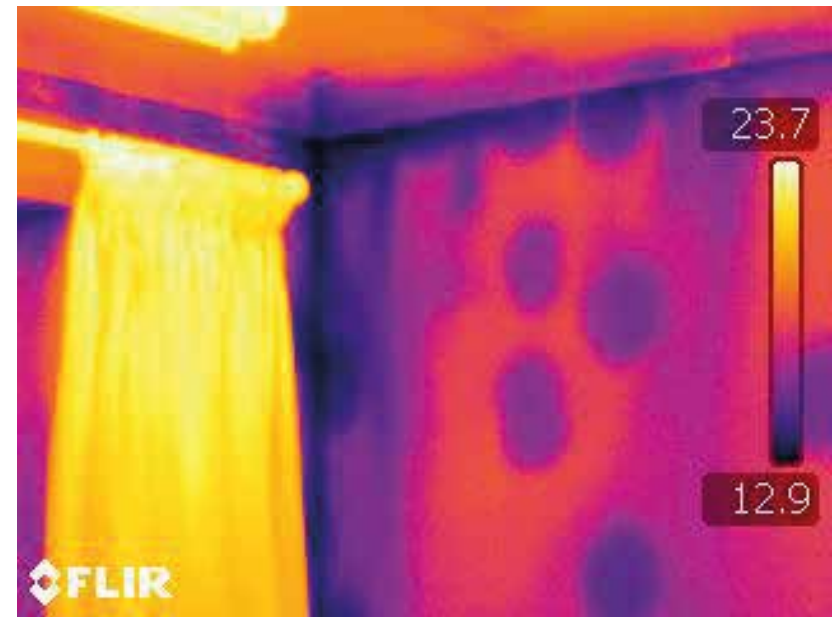
Coastal conditions can be extremely hard on conventional renders leading to continual maintenance and costly painting works.

CorkSpray is impervious to salt air/water, it will not crack or peel, keeping your house looking fantastic and maintenance free, and a lot warmer...



**DID YOU  
KNOW?**

# WE ELIMINATE BLACK SPOT AND CONDENSATION



The diagram shows a typical house with either a cavity or a solid brick construction. The outside temperature is  $-5^{\circ}\text{C}$  and the room temperature is  $+20^{\circ}\text{C}$ , this means the thermal scope is  $25^{\circ}\text{C}$ .

With the shift being greater than  $15^{\circ}\text{C}$ , condensation will form on the warmer surface, and particularly where brick ties or adhesive dots for plaster board are present.

The colder it gets, and the warmer the room, the condensation increases.

Cork will not freeze. It tricks the wall into thinking its much warmer and therefore reduces the shift, which eliminates the condensation for good.

# PRODUCTS



## Ecofriendly and Sustainable

Corkspray, whichever the version, is a sustainable product and it comes from the Cork Oak Tree bark, without harming the tree!



## Thermal and acoustic improvement

Due to its composition, cork provides thermal and acoustic properties.  
*Cork has been used for many centuries!*



## Flexible and fireproof

The Corkspray coating is very flexible, covering small previous cracks. Additionally, it does not burn and is UV solar radiation resistant.



## Maintenance free

Another of its advantages in comparison with a traditional coating is that it is maintenance free. No need to renovate the façade every 5 years!

**DID YOU  
KNOW?**

*We can mix to any  
RAL specification  
on request...*

**F08** | CorkSpray coating for façades in coarse texture

**F09** | CorkSpray coating for façades in fine/smooth texture

**F10** | CorkSpray coating with hydrophobic additives for installation on roofs, terraces in either coarse or fine texture

**F08G** | CorkSpray coating for façades in coarse texture and thicker layers than standard F08

**F-Granit** | Granite appearance in very thin layer and very smooth texture (only available in one colour)

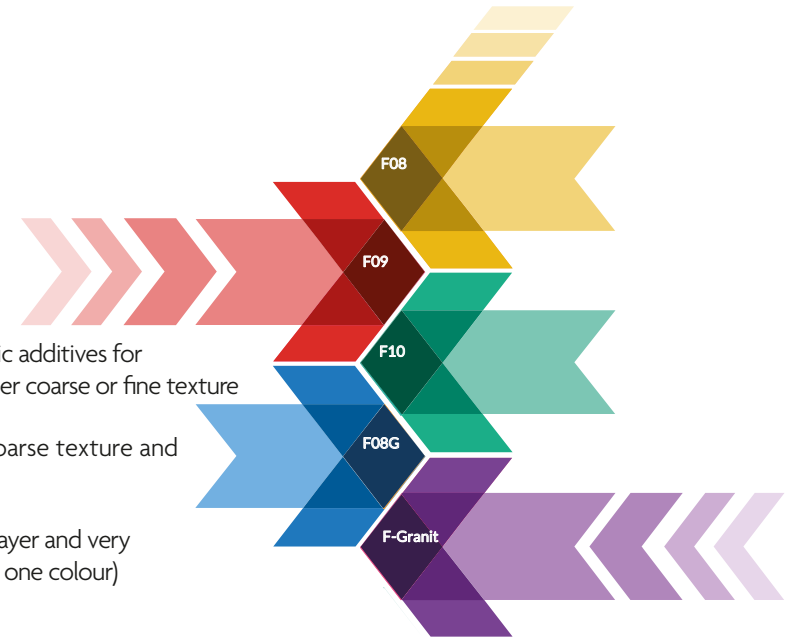
# VIPEQ

**NL** | CorkSpray coating for thicker layers of insulation. Alternative to cellular glass and 10mm thick in just 2 layers

**F-Rústico** | CorkSpray rustic finish coating with bigger cork granules

**CorkFix** | Adhesive cork paste for covering cracks, levelling surfaces or ICB cork boards

**F-Oxiprotect** | Corkspray coating that removes rust and provides protection to the substrate



# STONE

---

STONE VIPEQ is a mineral coating with a high degree of hardness and great flexibility based on coloured quartz particles, binders of varying types and additives that provide it with qualities for display, both outdoors as in indoor application

Paving solution for rooftops, flat roofs and terraces.

Paving of pedestrian areas of public spaces & parks.

Non-slip interior or exterior flooring.

Baseboards for vertical façade and interior walls.

Wall and floor covering of bathrooms & pools.

<b>Finish texture:</b>	Rough.
<b>Appearance:</b>	Paste look product.
<b>High surface hardness.</b>	
<b>Spray finish slipperiness (UNE-ENV 12633:2003):</b>	Class 3 according to DB SUA 1 of the CTE.
<b>Colors:</b>	To consult.
<b>Yield:</b>	3.5-3.8 kg/m <sup>2</sup> .



VIPEQ

# MAP

---

MAP is a spray applied waterproofing membrane formulated with agglomerated particles of recycled rubber and additives for the waterproofing of roofs or facades.

It serves as a substitute for traditional asphalt felt with three major advantages:

Eliminates installation issues in critical points such as corners, protrusions, etc. Where asphalt felt, cuts, folds, and patches are used.

With MAP, you simply spray over that area with the same waterproofing result as on a smooth area.

Can be sprayed onto any irregular surface. It simultaneously provides waterproofing and a final aesthetic result.

**Easy application by cold spraying.**

**UV-resistant and flexible at low temperatures.**

**Broof fire performance.**

**Full adhesion to the substrate regardless of the material and texture.**

**No joints or patches.**

**No need for base mesh or heavy rolls for application.**

**Waterproofing and/or vapor barrier on vertical surfaces in buried wall claddings, etc.**



## VIPEQ

### **Appearance**

Coarse Granulated

### **Fire reaction (UNE-EN 13501-5:2007)**

Broof (t1)

### **Slip resistance (UNE-ENV 12633:2003)**

Class 3 according to DB SUA I of the CTE

### **Application thickness in 2 coats**

3mm total

### **Coverage**

3 kg/sqm<sup>2</sup> in total

# ExtrafineMAP

---

Waterproofing for flat or sloped roofs, rooftops, terraces, walls, etc.  
Can be left exposed without protection as it resists UV rays.  
It can also be combined with a subsequent spray application of VIPEQ cork to increase thermal insulation or other VIPEQ products depending on the desired performance.

Creation of ridges, bands, gutters, etc.  
Sealing of drains, drainage systems, chimneys, etc., in waterproofing solutions using MAP.

Completely waterproof, elastic, high mechanical strength,  
and good resistance to temperatures between  $-15^{\circ}\text{C}$  and  $+105^{\circ}\text{C}$ .  
Good crack bridging.  
Liquid product that adapts to any shape. Resistant to water, alkalis, etc.  
Solvent-free.



*This product will renovate Asbestos Roofs,  
& render it 100% waterproof, eliminate  
delamination issues, provide a uniform  
colouration with no future maintenance*





# ELIMINATING DAMPNESS & CONDENSATION

---

**THIS IS A WELL KNOWN PROBLEM IN THE UK, ESPECIALLY WITH THIN WALL CONSTRUCTION BUILDINGS.**

**THIS PROBLEM IS TOTALLY AVOIDABLE WITH THE THERMAL BREATHABILITY OF CORK AS A RENDER OR TIWI SOLUTION.**

**STOP TRYING CONVENTIONAL METHODS WHICH DON'T WORK AND OPT FOR A LONG TERM SOLUTION WITH THE INNOVATION OF NATURE'S GIFT TO US, SPRAY CORK.**

# THIN WALL/ TIWI/EWI INSULATION

---

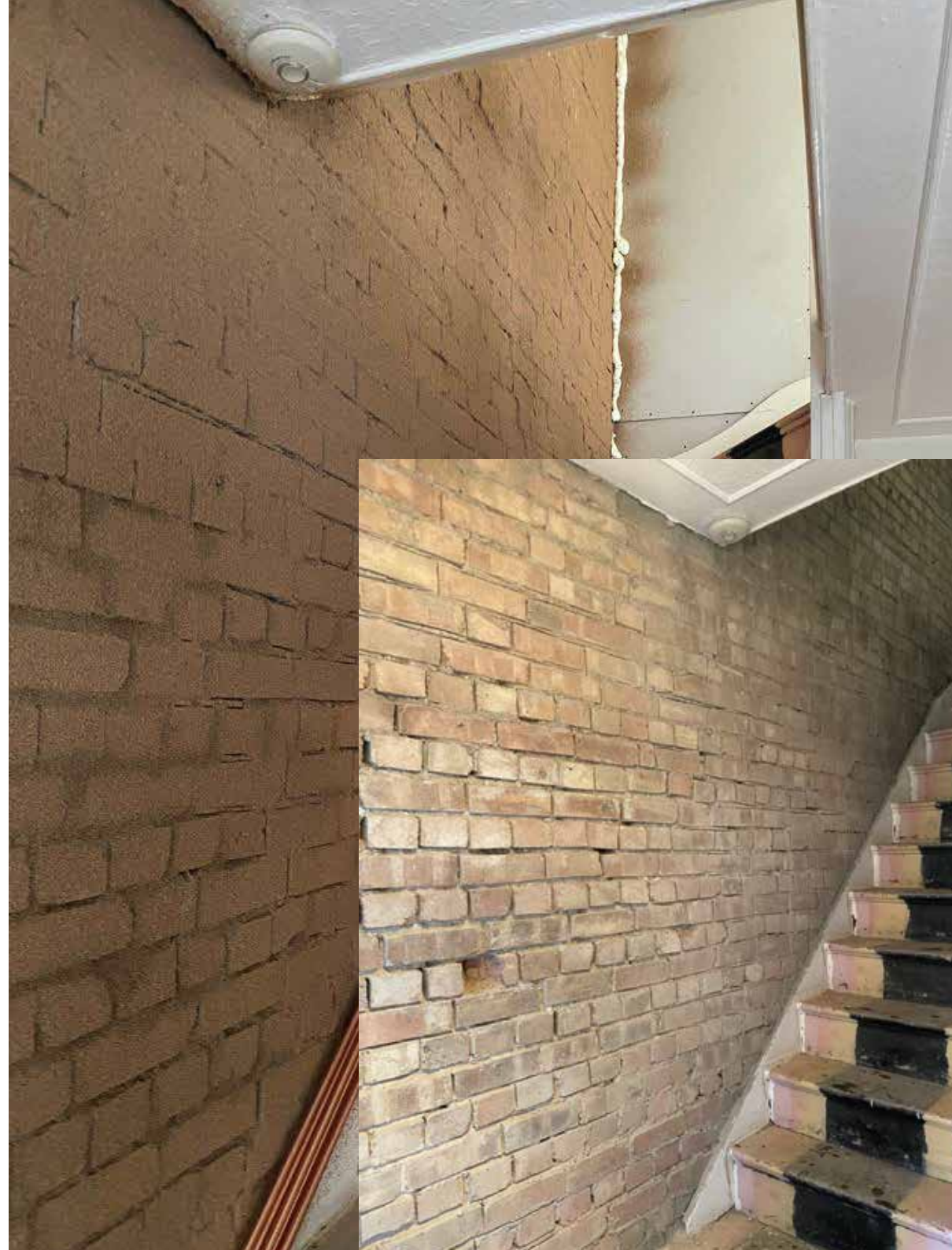
Single brick construction, very cold house in winter with dampness emerging from poor external pointing.

We strip these walls back to the brick to get the cork membrane directly onto the brick itself for the best results.


We apply around 5mm of cork which is then skimmed with a breathable finish plaster. No loss of period features such as Cornices and rails, and existing sockets are unaffected with only a maximum of 7/8mm thickness to yield a 30% increase in thermal insulation.

Condensation and dampness is controlled by the differential in External temperature and internal room temperature with the differential lessened by the wonder of the cork membrane itself.

This is the tried and tested solution for all thin wall projects versus all IWI panel solutions.



# ASBESTOS ENCAPSULATION



**DID YOU  
KNOW?**

*This Chrysotile roof is perfect for encapsulation waterproofing and insulating with cork render*

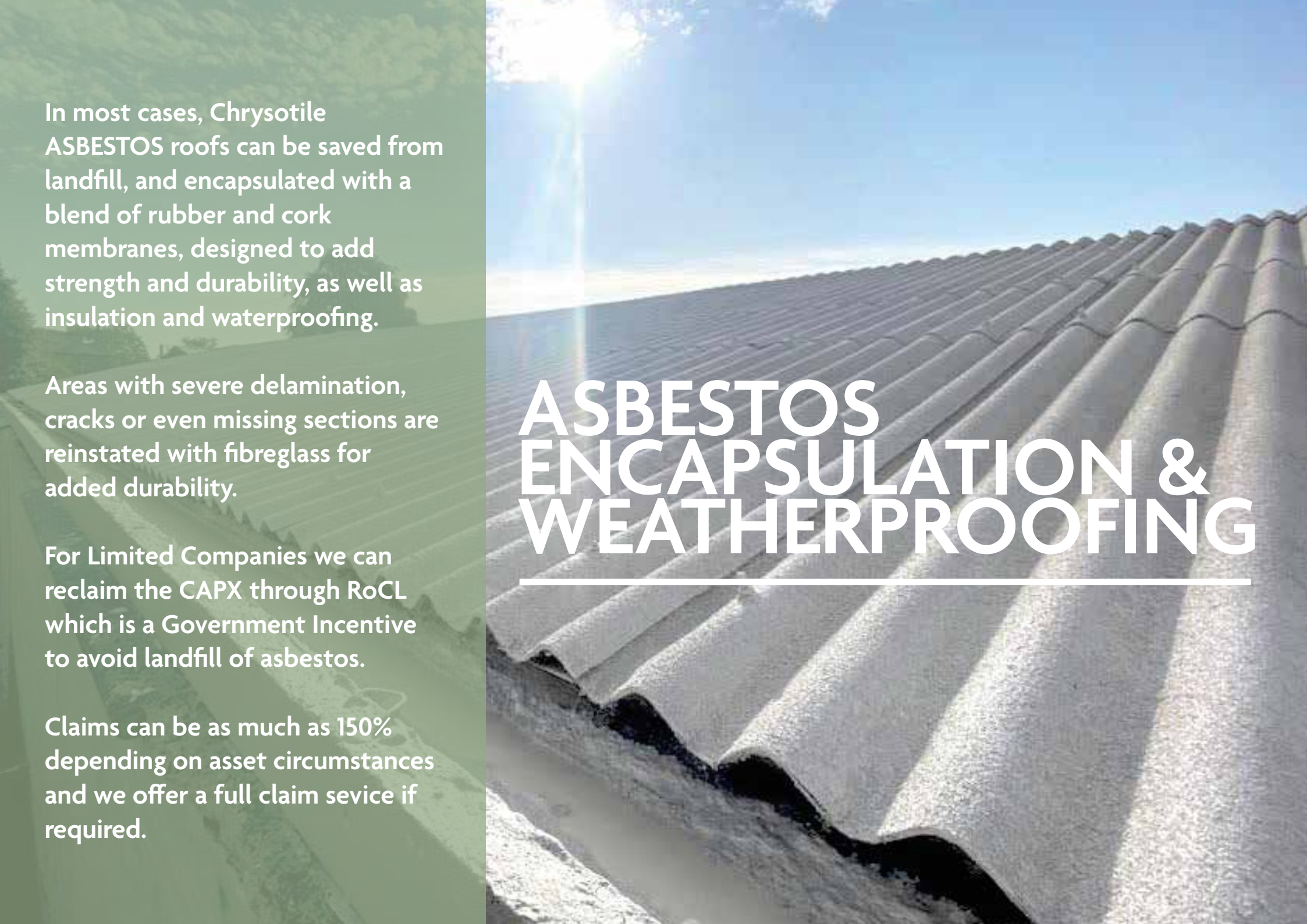


In most cases, Chrysotile ASBESTOS roofs can be saved from landfill, and encapsulated with a blend of rubber and cork membranes, designed to add strength and durability, as well as insulation and waterproofing.

Areas with severe delamination, cracks or even missing sections are reinstated with fibreglass for added durability.

For Limited Companies we can reclaim the CAPX through RoCL which is a Government Incentive to avoid landfill of asbestos.

Claims can be as much as 150% depending on asset circumstances and we offer a full claim service if required.



# ASBESTOS ENCAPSULATION & WEATHERPROOFING

---